

Atty. Docket No.: PG3416US2

*contd.  
B1*

8. (Amended) A method as claimed in claim 3, wherein the susceptible cancer is a susceptible pancreatic cancer.

9. (Amended) A method as claimed in claim 3, wherein the susceptible cancer is a susceptible head and neck cancer.

*Sub  
B1*

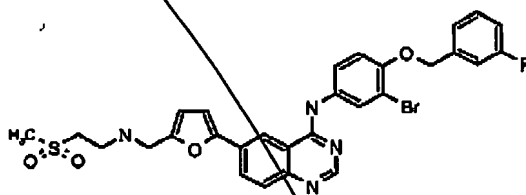
10. (Amended) A method as claimed in claim 3, wherein the susceptible cancer is a susceptible cancer characterized by expression or over-expression of EGFR.

11. (Amended) A method as claimed in claim 3, wherein the susceptible cancer is a susceptible cancer characterized by expression or over-expression of erbB-2.

12. (Amended) A method as claimed in claim 3, wherein the susceptible cancer is a susceptible cancer characterized by expression or over-expression of EGFR and erbB-2.

Please add claims 13-19.

-13. (New) A compound of the formula:



and salts or solvates thereof.

14. (New) A pharmaceutical formulation, comprising: the compound of claim 13 or a pharmaceutically acceptable salt or solvate thereof together with one or more pharmaceutically acceptable carriers, diluents, or excipients.

*A2  
Sub  
B1*

Atty. Docket No.: PG3416US2

*contd.  
a2  
Sub  
B1*

~~15. (New) A method of treating a susceptible cancer in a human or animal subject mammal, comprising administering to said subject an effective amount of a compound as claimed in claim 13.~~

~~16. (New) A method as claimed in claim 16, wherein the susceptible cancer is a susceptible breast cancer.~~

~~17. (New) A method as claimed in claim 16, wherein the susceptible cancer is a susceptible non-small cell lung cancer. B~~

~~18. (New) A method as claimed in claim 16, wherein the susceptible cancer is a susceptible ovarian cancer.~~

*Sub  
B1*

~~19. (New) A method as claimed in claim 16, wherein the susceptible cancer is a susceptible stomach cancer.~~

~~20. (New) A method as claimed in claim 16, wherein the susceptible cancer is a susceptible pancreatic cancer. B~~

~~21. (New) A method as claimed in claim 16, wherein the susceptible cancer is a susceptible head and neck cancer.~~

*Sub  
B1*

~~22. (New) A method as claimed in claim 16, wherein the susceptible cancer is a susceptible cancer characterized by expression or over-expression of EGFR.~~

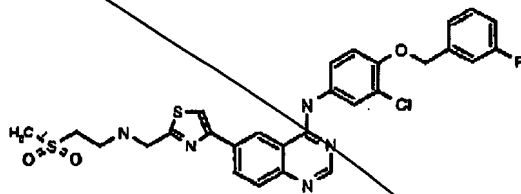
~~23. (New) A method as claimed in claim 16, wherein the susceptible cancer is a susceptible cancer characterized by expression or over-expression of erbB-2.~~

~~24. (New) A method as claimed in claim 16, wherein the susceptible cancer is a susceptible cancer characterized by expression or over-expression of EGFR and erbB-2.~~

Atty. Docket No.: PG3416US2

*contd.*  
*A/2*  
*Sub*  
*B1*

25. (New) A compound of the formula:



and salts or solvates thereof.

26. (New) A pharmaceutical formulation, comprising: the compound of claim 25 or a pharmaceutically acceptable salt or solvate thereof together with one or more pharmaceutically acceptable carriers, diluents, or excipients.

27. (New) A method of treating a susceptible cancer in a human or animal subject mammal, comprising administering to said subject an effective amount of a compound as claimed in claim 25.

28. (New) A method as claimed in claim 27, wherein the susceptible cancer is a susceptible breast cancer.

29. (New) A method as claimed in claim 27, wherein the susceptible cancer is a susceptible non-small cell lung cancer. *B*

30. (New) A method as claimed in claim 27, wherein the susceptible cancer is a susceptible ovarian cancer.

*Sub*  
*B1*

31. (New) A method as claimed in claim 27, wherein the susceptible cancer is a susceptible stomach cancer.

32. (New) A method as claimed in claim 27, wherein the susceptible cancer is a susceptible pancreatic cancer. *B*

Atty. Docket No.: PG3416US2

*contd.*  
*2*

*Sub*  
*191*

33. (New) A method as claimed in claim 27, wherein the susceptible cancer is a susceptible head and neck cancer.
34. (New) A method as claimed in claim 27, wherein the susceptible cancer is a susceptible cancer characterized by expression or over-expression of EGFR.
35. (New) A method as claimed in claim 27, wherein the susceptible cancer is a susceptible cancer characterized by expression or over-expression of erbB-2.
36. (New) A method as claimed in claim 27, wherein the susceptible cancer is a susceptible cancer characterized by expression or over-expression of EGFR and erbB-2.